



Australian Child and
Youth Wellbeing Atlas

The Power of Data: The Australian Child and Youth Wellbeing Atlas

A/Prof Rebecca Glauert



Acknowledgement of country

In the spirit of reconciliation, we acknowledge the Traditional Custodians of country throughout Australia and their connections to land, sea and community.

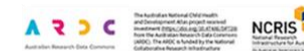
We pay our respects to Elders past, present and emerging.



Our partnership

The ACYWA represents a significant partnership of:

- researchers,
- policy makers,
- philanthropic organisations,
- clinicians,
- government,
- community advocates, and
- children and young people.



Current state'



Our children and young people are not doing as well as they should be in “the land of plenty”.

We are facing the prospect of leaving our future generation worse off than the generation before them...

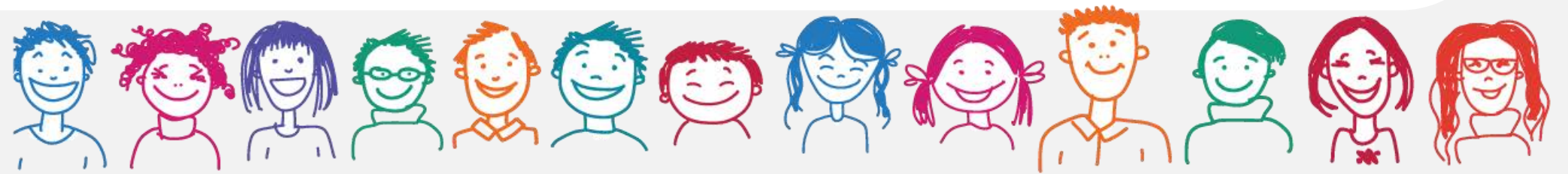
This is not a legacy we want to leave behind!



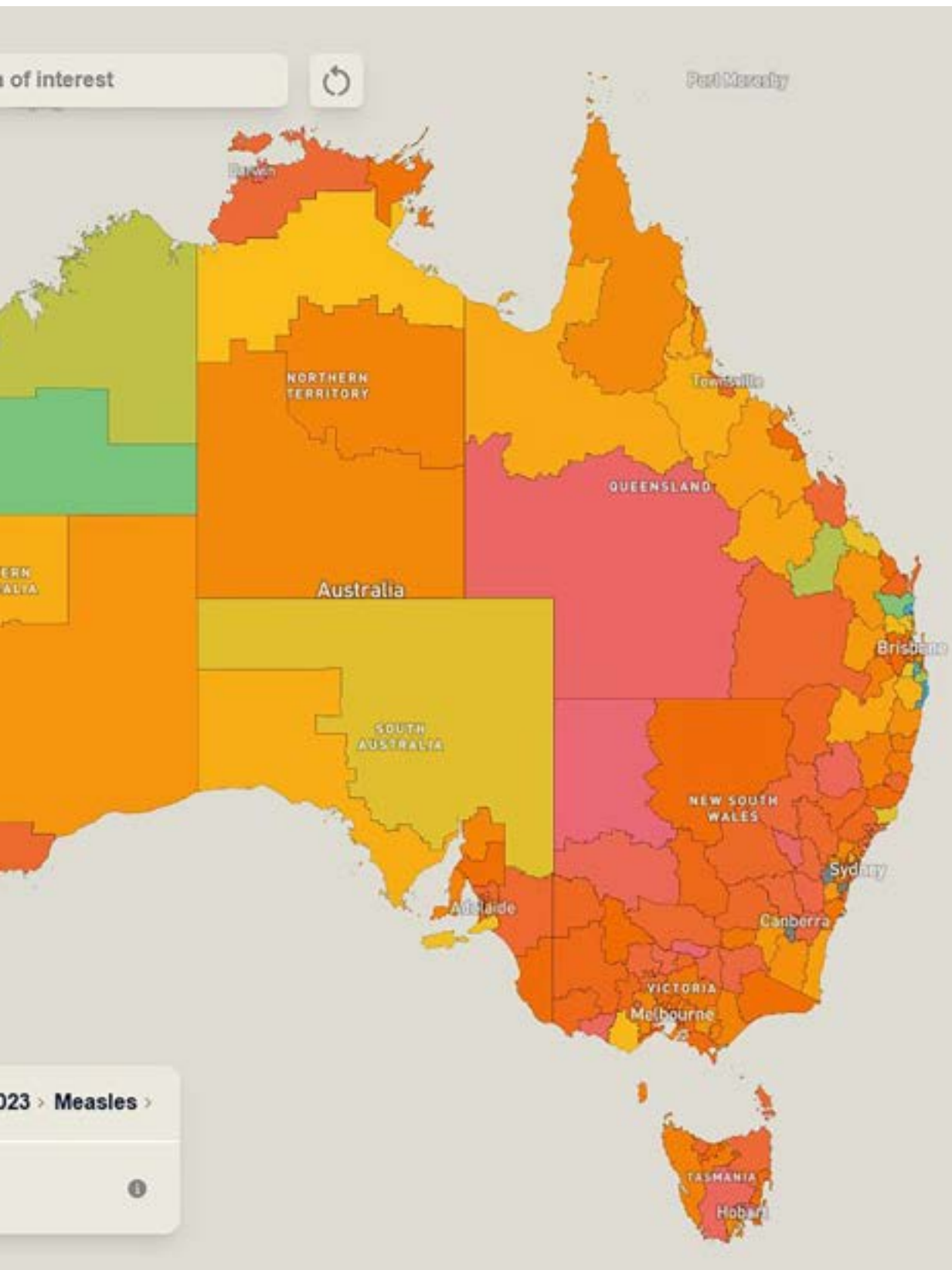
The need

- Data on children and young people are held in a multitude of disparate locations across the country and jurisdictions.
- This makes it impossible to achieve a comprehensive picture of children and young people without significant effort (and money).

- Without this complete understanding, effective, efficient, and evidence-based decisions are unattainable.
- Policy makers, researchers, service providers and community members require access to robust data on children and young people.



The data need' <



- Where children live – their community – is important
- There is no one single source where people can access data on children and young people.
- Significant FTE is expended across Government, research, NGOs, and communities to try to access data that are 'locked up' and/or monetised
- Data can be difficult to understand

The approach

- 1** Eliminate obstacles that hinder equitable access to data on children and young people. Including applications for data, ethics approvals, data access costs, data curation and simplifying data into meaningful outputs.
- 2** Foster an evidence-driven environment for monitoring the health and overall welfare of young Australians.
- 3** Create a strong national partnership of state and federal organisations, researchers, policy makers, and non-government agencies.
- 4** Provide an interactive mapping tool that utilises geographic information system (GIS) technology to visualise data across all key wellbeing indicators for children and young people.

We anticipate this will result in significant efficiencies across government and non-government, in service and program delivery and result in improved health and wellbeing outcomes for children, young people and their families.



The Atlas'



The Australian Child and Youth Wellbeing Atlas maps data on children and young people aged 0 to 24 across Australia.

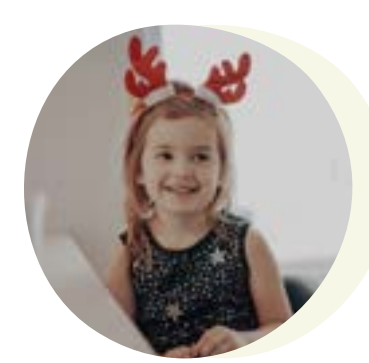
This new data asset is free, holistic and promotes equitable accessibility.

The Atlas enables and accelerates:

- **access**
- **visualisation**
- **analysis, and**
- **monitoring**

of health and wellbeing metrics for children and young people across our country.

Privacy



- No individual data are displayed (or accessible by users).
- Data is visualised to agreed levels of aggregation (e.g., suburb (SA2), SA3, Local Government Area or other).
- Suppression of low counts and populations.
- Withhold rate estimates from areas with small populations (or aggregate up).
- The 5 safes



The indicators

The Atlas project defines children's health, development, and wellbeing based on the Nest framework, an evidence-based model developed by the Australian Research Alliance for Children and Youth (ARACY).

This framework encompasses six wellbeing domains or themes.

A seventh domain (Sustainable environments) may be included.



Healthy



Material basics



Valued, loved
and safe



Learning

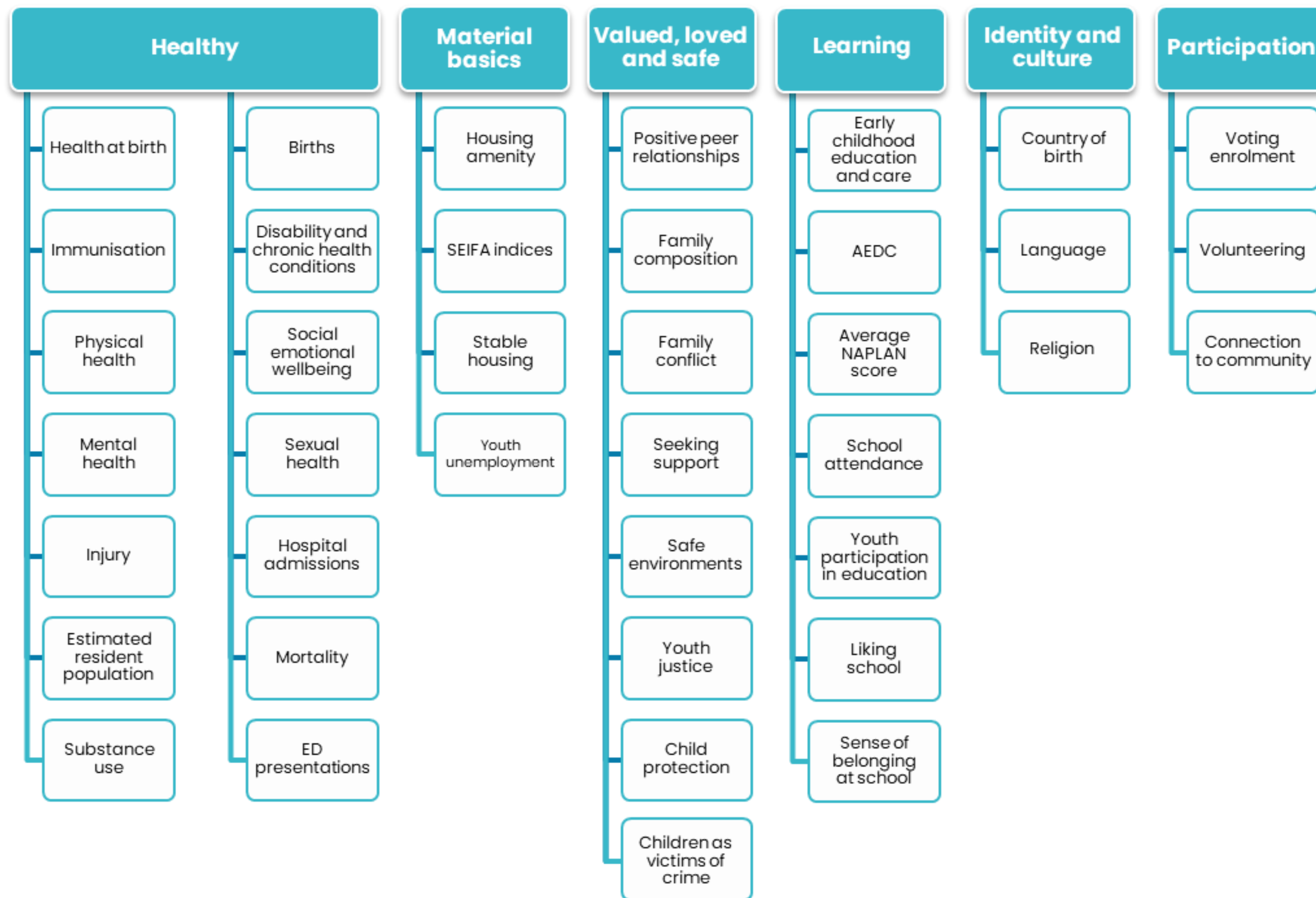


Participation



Positive sense
of identity
and culture

The Nest domains



Demonstration



Australian Child and Youth
Atlas platform
(the maps)

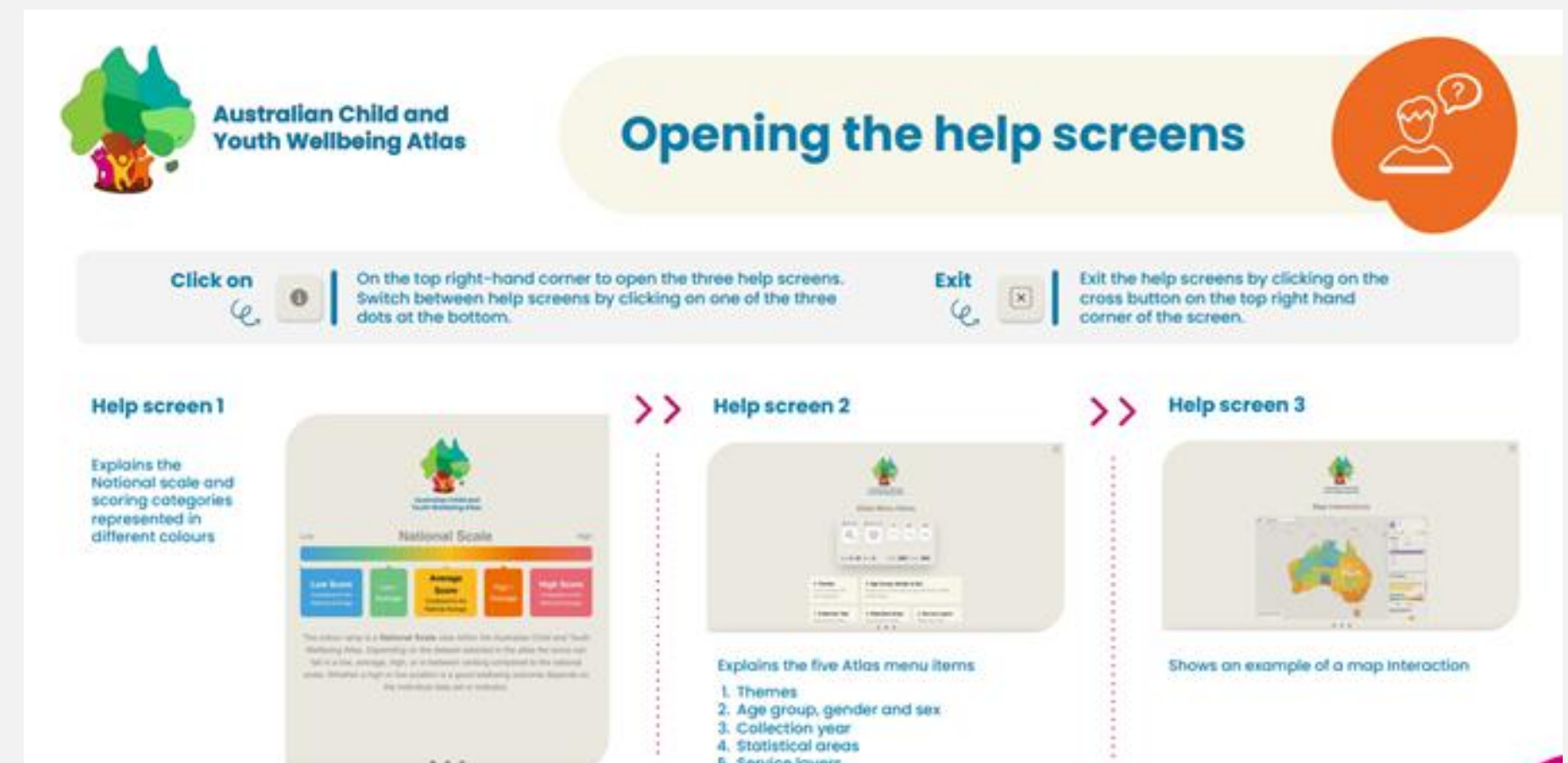
Website: www.australianchildatlas.com



Other Resources

Additional Atlas resources are available through the main website: www.australianchildatlas.com

- **Indicators information** – description and policy context
- **Technical information** – metadata, technical methods, statistical areas, visualisation, licensing
- **User guides**



The Impact



Importance of data and information

Drive Change: Data highlights the need for transformation and improvement.

Understand Situations: Enables a clear view of challenges and opportunities.

Set Priorities: Identifies where focus and resources are most needed.

Track Progress: Monitors achievements and milestones over time.

Evaluate Outcomes: Assesses the impact of interventions and initiatives.

Place-based enquiry

Utilise **Data Mapping** to explore and address specific community needs and inform local health planning.

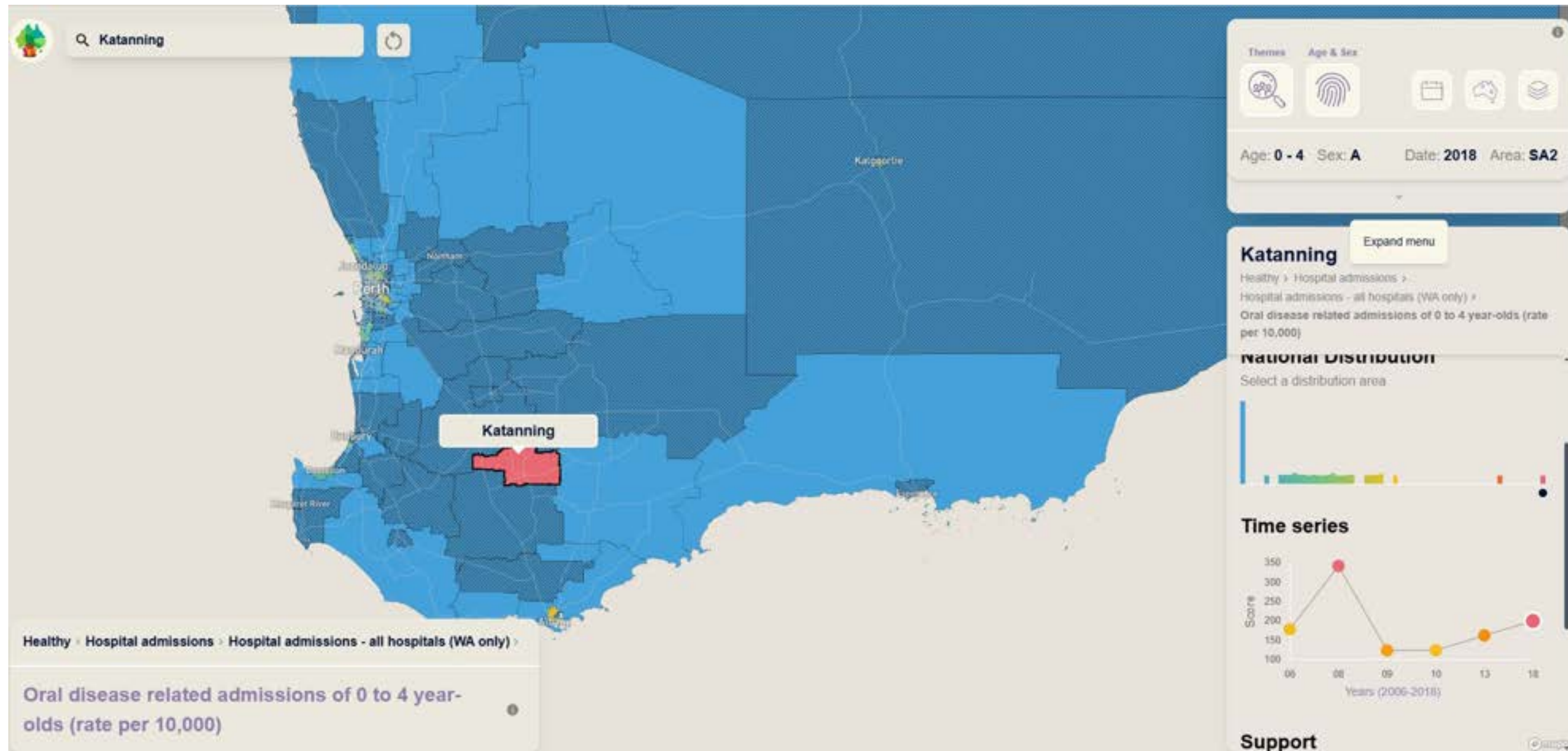


HANSARD WA Inquiry into Child Development Services (2022)



- Child and maternal health figures were sourced from the Atlas in a situational analysis to inform local plans for the Early Years Initiative in the Central Great Southern.
- The analysis outlined the situation in the community with respect to key indicators impacting on children's health, development, and learning, and access to related services.
- The Atlas identified several priority areas including high incidence of teen pregnancies, and high rates of smoking during pregnancy compared to the WA average.

Early Years Partnership – Central Great Southern (2023)



WA Early Years Partnership Central Great Southern
(2023): Children Growing Strong. Early Years
Community Plan



Early Years Partnership – Central Great Southern (2023)

Local Agencies Partnering with the University of Western Australia for Improved Dental Care for Children

With the generous support of the Early Years Partnership, Amity Health received \$137,650 over 18 months to deliver the Central Great Southern Dental Health Project.

The Central Great Southern dental project focuses on dental health and aims to reduce the impact of a high sugary diet on oral health. It provides a dental service locally which will be cost effective, improve dental hygiene, and reduce the impact of early childhood tooth cavities in children aged 1–4 years in the Central Great Southern.

The project is teaching parents and carers to use photo identification which is analysed by dental professionals in Perth. Practitioners triage any dental work required and minor treatments will occur in the Central Great Southern reducing the need for families to travel to Perth for treatment.



In Central Great Southern,
approximately

5.6%
of preventable
hospitalisations

of 0–9 year olds is due to
dental conditions.



Supporting Community Data Access

- Attendance at an online ACYWA training workshop prompted a review of paid data solutions within a Far North Queensland NGO.
- The small collective is currently paying 10% of their program budget to commercial data providers to access data for their local community.
- They found that almost all (90%) the data being sourced is readily available on the Atlas, encouraging a shift towards reinvesting these funds into community-led mapping and engagement projects.



Community use



Empowering communities

- Keeps communities focused and informed through data-driven insights.
- Guides community-led advocacy to improve health and wellbeing for children and young people.
- Especially vital in communities facing higher levels of disadvantage and entrenched disadvantage.

Data as a Narrative

Data is more than numbers—it's about stories.

- Administrative records
- Community experiences
- Survey results

Together, these diverse data sources create a comprehensive picture.



Next Steps



Extend platform functionality

- Overlay
- Reporting function
- Infographics
- Community data upload

State/Territory based data collections

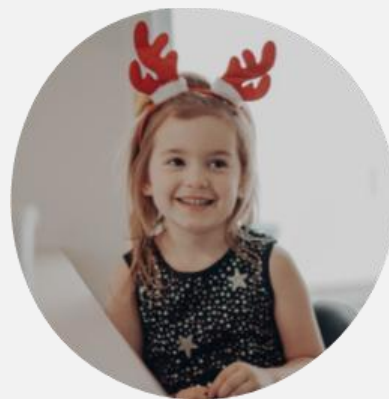
- WA exemplar
- First Nations Data Governance



The Smarts

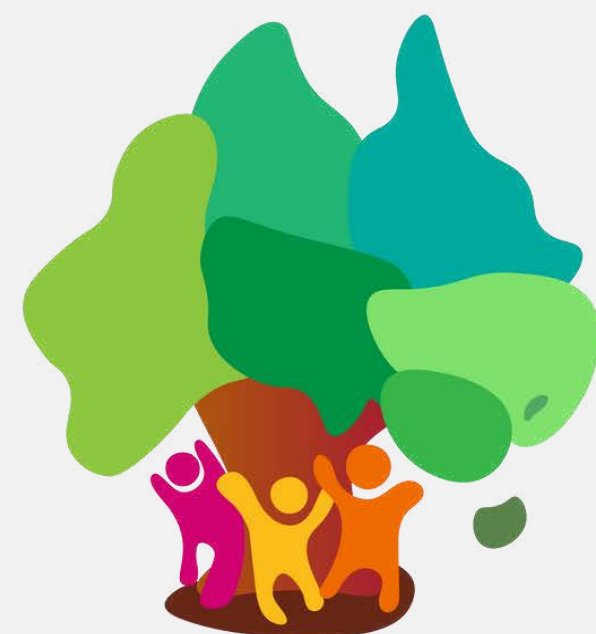
- Predictive modeling
- Fast tracking best practice:
 - Needs based intervention recommendations
 - Understanding the “why”
- Humanising the platform
- Developing indices (wellbeing, vulnerability, etc.)
- AI Integration
 - Smart insights
 - Generative tools





Contact Us
info@australianchildatlas.com





Australian Child and Youth Wellbeing Atlas

