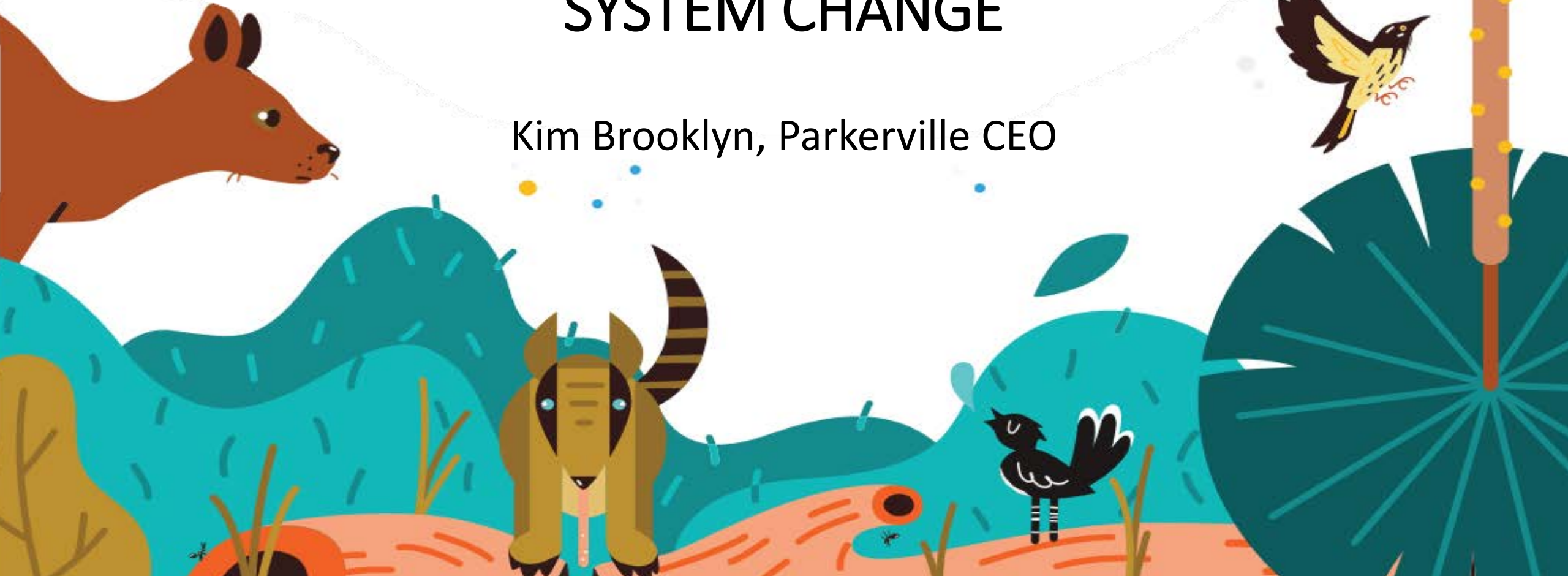




SERVICE INNOVATION FOR SYSTEM CHANGE

Kim Brooklyn, Parkerville CEO





Acknowledgement of Country

Ngala kaaditj Whadjuk Noongar moort keyen kaadak nidja boodja

Parkerville Children and Youth Care respectfully acknowledge the Whadjuk people of the Noongar Nation as the Traditional Owners and Custodians of their culture, land and waters on which we work, live, and meet.

We pay our respect to all Elders past and present, for they hold the memories, traditions, and cultural knowledge of Aboriginal Australia.



Meeting Place

Yarning circle
Culturally safe place to meet.



Circular Holistic Approach

Each child is supported, each family is supported from beginning to end to provide a circular connected approach.



Walking Together

Joined paths represent walking this journey together and supporting the many different pathways for each child.



Healing

Leaves and flowers represent the healing and growth that can happen through love and support.



U Shapes

Represent all clients, participants, staff, parents, children and community.



Our Data/Our 'Why' if you like...

Our Impact

13,170
family members
supported over
2023/2024

In the past year, our services have made a profound difference in the lives of countless children, young people, and their families. Through our dedicated programs and support systems, we have reached **13,170** children and young people, helping them overcome challenges and providing them with the tools and care they need to thrive. Our commitment to delivering compassionate, evidence-based support continues to empower those in our care, ensuring they have the opportunity to build brighter futures.



790

Children impacted by child sexual abuse, family and domestic violence and/or homicide supported in our **Child, Youth & Family Centres**.



5,759

Support sessions were provided to children affected by child sexual abuse, family and domestic violence, and/or homicide at our **Child, Youth & Family Centres**.



126

We supported 126 children and young people impacted by homelessness.

29% also participated in skill development groups.



72%

Of AYAG clients reported an increase in their knowledge of alcohol and other drugs (AOD).

65% felt they had gained a better understanding of the risk and protective factors associated with AOD use, helping them to delay, prevent, or reduce harm for young people.



8,163

Children and parents attended **early intervention sessions** held at **Child and Parent Centres**.



3648

Children and parents attended a **health appointment** at our **Child and Parent Centres**.



117

Children and young people were provided a **safe place to live** through Our Way Home, including **Foster Care, Group Foster Care and Temporary Care Homes**.



85%

Of children and young people **maintained regular contact** with their families and connection to culture and community while in care, supporting steps towards reunification.



10%*

Of children and young people were **reunited with their families** after being in care.



24

Students participated in our **Education, Employment and Training (EET) Program** and **100% graduated** with their Certificate II in General Education.



96%

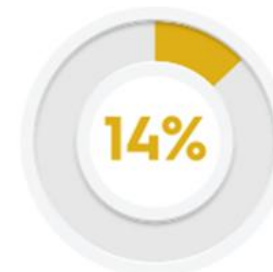
Of EET graduates transitioned to **employment** or further training after graduation.

* The Department of Communities experiences a reunification rate of 1.4%.

Research Insights on Prevalent Issues Among Children, Young People, and Families

Our ongoing research into the challenges faced by the children, young people and families we support has yielded significant findings. This investigation highlights the prevalent issues impacting our community, providing valuable insights that will guide our continued efforts to address these needs effectively.

In 2023/24, we categorised the Adverse Childhood Experiences of our clients as follows:



Emotional Abuse



Sexual Abuse



Neglect



FDV
(based on Witness to FDV as the higher number)



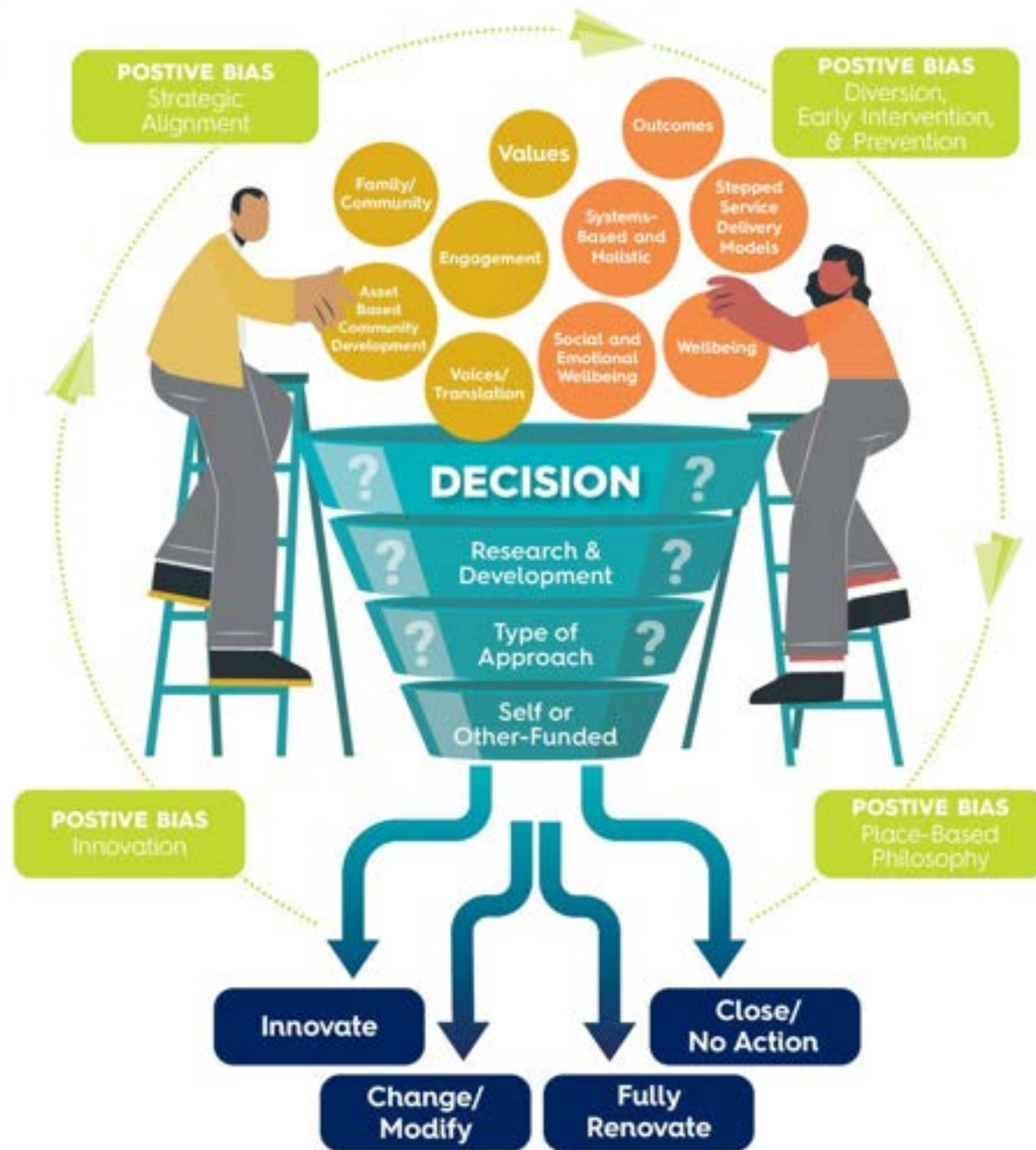
Parental drug or Alcohol use

Nudging the System



Expecting a Different Outcome



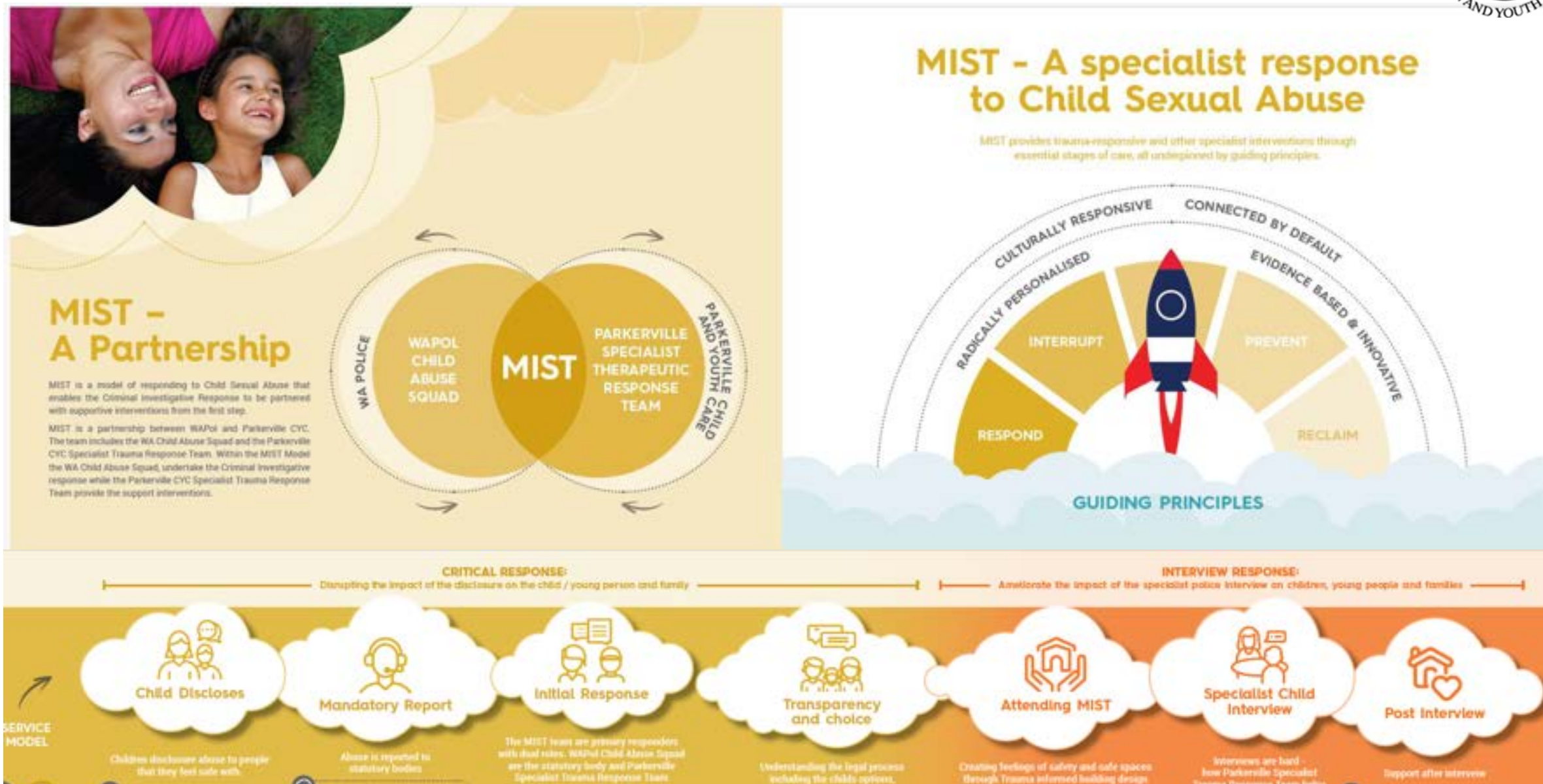




Service
Constellations to
meet children,
young people
and family needs



MIST- 2025 version



MIST - A Partnership

MIST is a model of responding to Child Sexual Abuse that enables the Criminal Investigative Response to be partnered with supportive interventions from the first step.

MIST is a partnership between WAPol and ParkerVille CYC. The team includes the WA Child Abuse Squad and the ParkerVille CYC Specialist Trauma Response Team. Within the MIST Model the WA Child Abuse Squad undertake the Criminal Investigative response while the ParkerVille CYC Specialist Trauma Response Team provide the support interventions.



MIST - A specialist response to Child Sexual Abuse

MIST provides trauma-responsive and other specialist interventions through essential stages of care, all underpinned by guiding principles.



CRITICAL RESPONSE:

Disrupting the impact of the disclosure on the child / young person and family

INTERVIEW RESPONSE:

Ameliorate the impact of the specialist police interview on children, young people and families



SERVICE MODEL

Child Discloses

Mandatory Report

Initial Response

Transparency and choice

Attending MIST

Specialist Child Interview

Post interview

Children disclose abuse to people that they feel safe with

Abuse is reported to statutory bodies

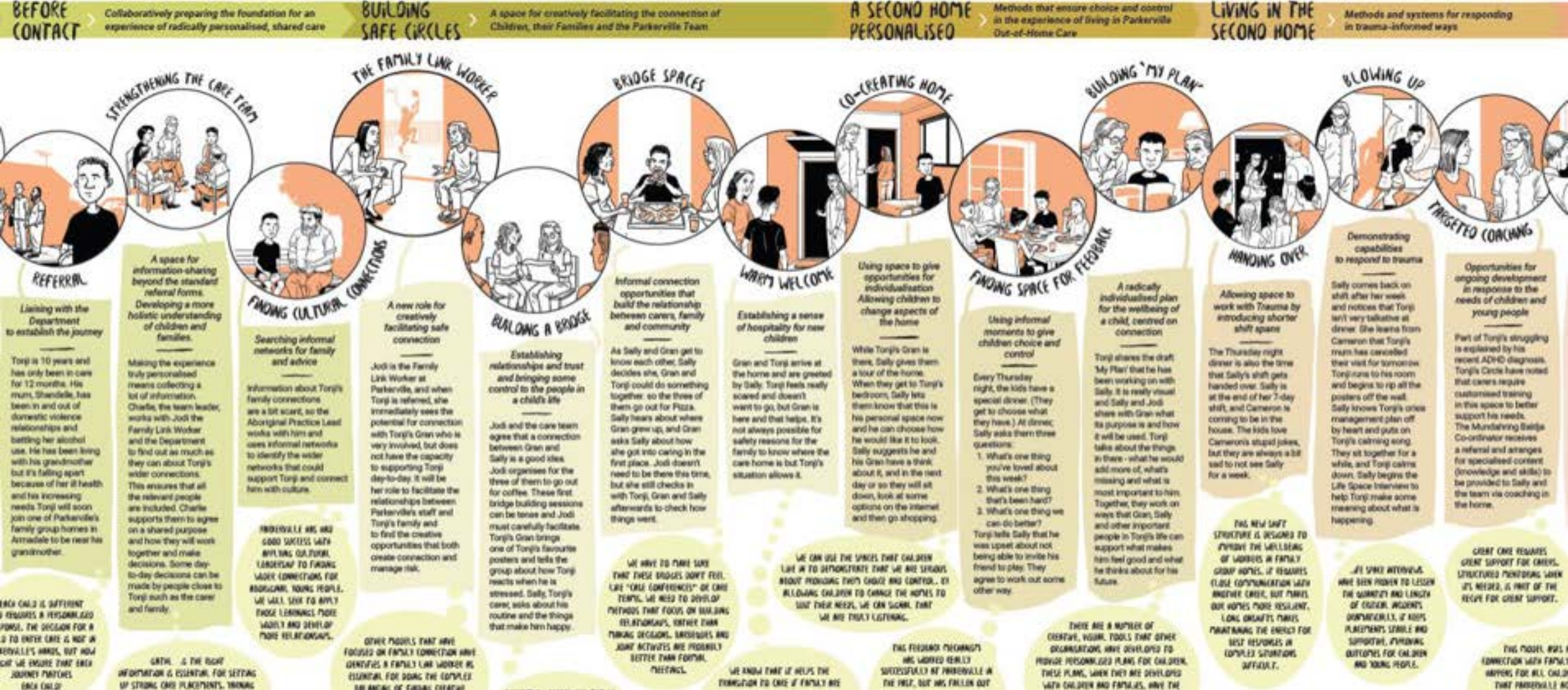
The MIST team are primary responders with dual roles. WAPol Child Abuse Squad are the statutory body and ParkerVille Specialist Trauma Response Team

Understanding the legal process including the child's options

Creating feelings of safety and safe spaces through Trauma informed building design

Interviews are hard - how ParkerVille Specialist Trauma Response Team helps

Support after interview



The 'Our Way Home' model





Our Way Home

Our Way Home (OWH) is a groundbreaking, award-winning model of out-of-home care that prioritises maintaining and strengthening connections between children, their families, communities and culture. At its core, OWH is a radically personalised shared care model designed with restoration as the ultimate goal - whether through safe family reunification or stable, long-term shared care arrangements built on trust and collaboration between the child, their family and their carer.

Each child's journey is uniquely tailored to their circumstances, needs, cultural identity and aspirations, ensuring that restoration happens at a pace and in a way that best supports their well-being. OWH also introduces innovative staff roles and creative tools, backed by practice guides, to foster a fundamental shift in mindset - one that recognises families as equal partners in the caregiving process.

Principles

Our Way Home has four Driving Principles, embedded from strategy to ground-level practice to achieve the best possible outcomes for children and young people:

Radically Personalised

The experience for each child is driven by their personal needs and preferences with a view to the time that they are no longer in care. We are flexible enough to change ourselves to deliver choice and control.

Embedded Culture

Respect for and connection to Aboriginal Culture is central to our work and is given equal weighting to clinical practice.

Connected by Default

We cannot support children if we do not also support families and communities - out-of-home care is shared care, and Parkerville plays an active role in facilitating safe family restoration.

Heart First, then Head and Hands

Radically personalised shared care cannot be achieved without a strong, skilled workforce with aligned values, and responsive systems to support them.

Our Impact

July 2023 - June 2024



5 Pillars

Five pillars - Safe, Connected, Thriving, Equipped Dream

Early evidence from Parkerville's Outcomes Framework shows that children and young people are reporting particularly strong ratings under **Safe** ("I feel I have a say in my home life"), **Connected** ("I have the people I want in my life") and **Thriving** ("I do things that I enjoy").



10%*

Of children and young people were reunified with their families after being in care.



85%

Of children and young people maintained regular contact with their families and connection to culture and community while in care, supporting steps towards reunification.



117

Children and young people were provided a **safe place to live** through Our Way Home, including Foster Care, Group Foster Care and Temporary Care Homes.

Sharing the model, and our learning

► The Co-Design process to develop Our Way Home involved direct engagement with 250 people, resulting in a truly innovative re-imagining of out-of-home care.

Parkerville, with the model's co-design partner Innovation Unit ANZ, won the 2023 Good Design Award Gold in Social Impact for Our Way Home, for seeking to transform out-of-home care by empowering children, young people, and their families with more choice and control, fostering connections between carers and children's families of origin.

► We have shared the model freely and openly, including presenting at the International Society for the Prevention of Child Abuse and Neglect (ISPCAN) Canada 2022 Congress, and at the 2025 FRSA National Child-Inclusive Practice Forum in Canberra. We will also be presenting Our Way Home at the ISPCAN 2025 Congress ("Child Well-being in a Changing Reality"), held this year in Lithuania.



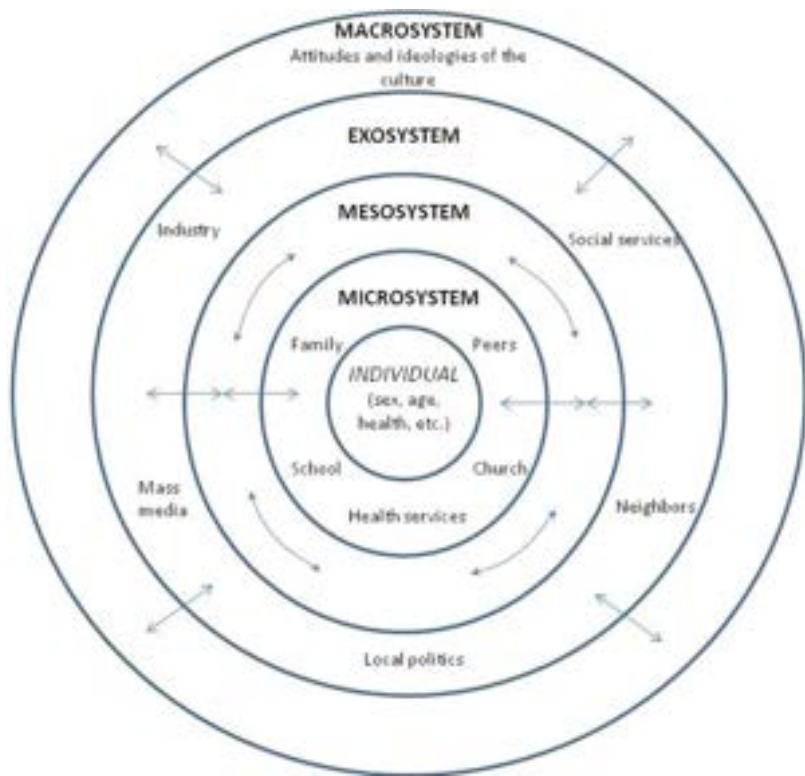
Maybe get good wifi and a better air conditioner

God, caring pretty please with a cherry on top

Thank you Lachie for all the help and I want to thank you for helping me achieve everything. Especially our holiday thank you I'm having a really good time

Vicki needs a pay rise :)





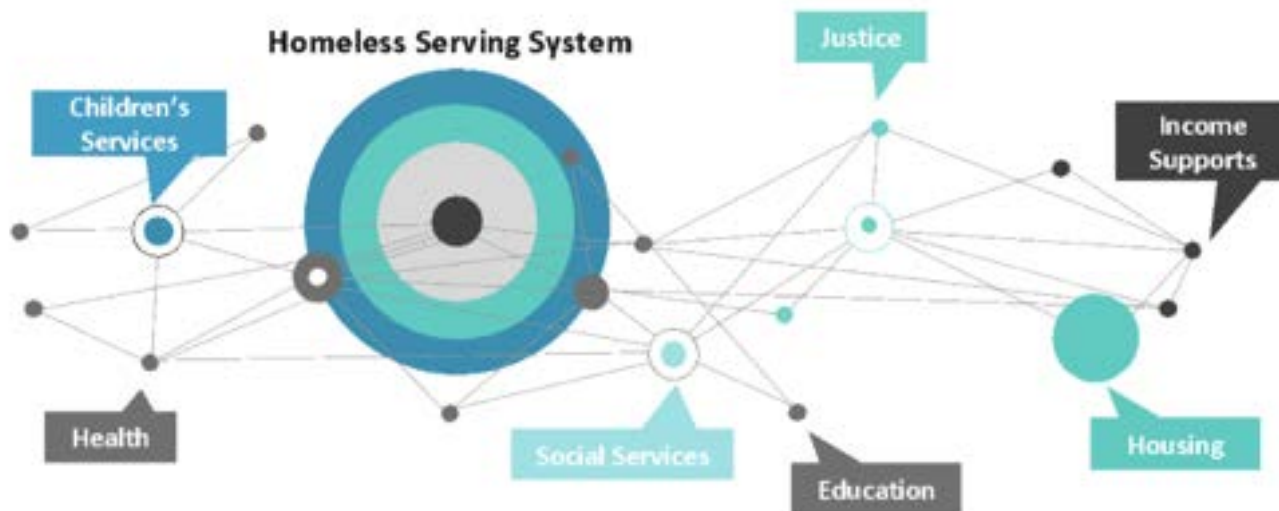
WE NEED TO DO BETTER TO BEAT YOUTH HOMELESSNESS

The stats are in and they paint a disturbing picture

The extent of homelessness for children in Australia represents a shocking failure of public policy. In 2022-23, more than 76,000 children under the age of 18 sought help from homelessness services. Of these children, almost 16,000 approached homelessness services alone, unaccompanied by a parent or caregiver, many fleeing violence or neglect at home. Approximately 60,000 children sought help as part of a family group.



Some key components of the homelessness ecosystem

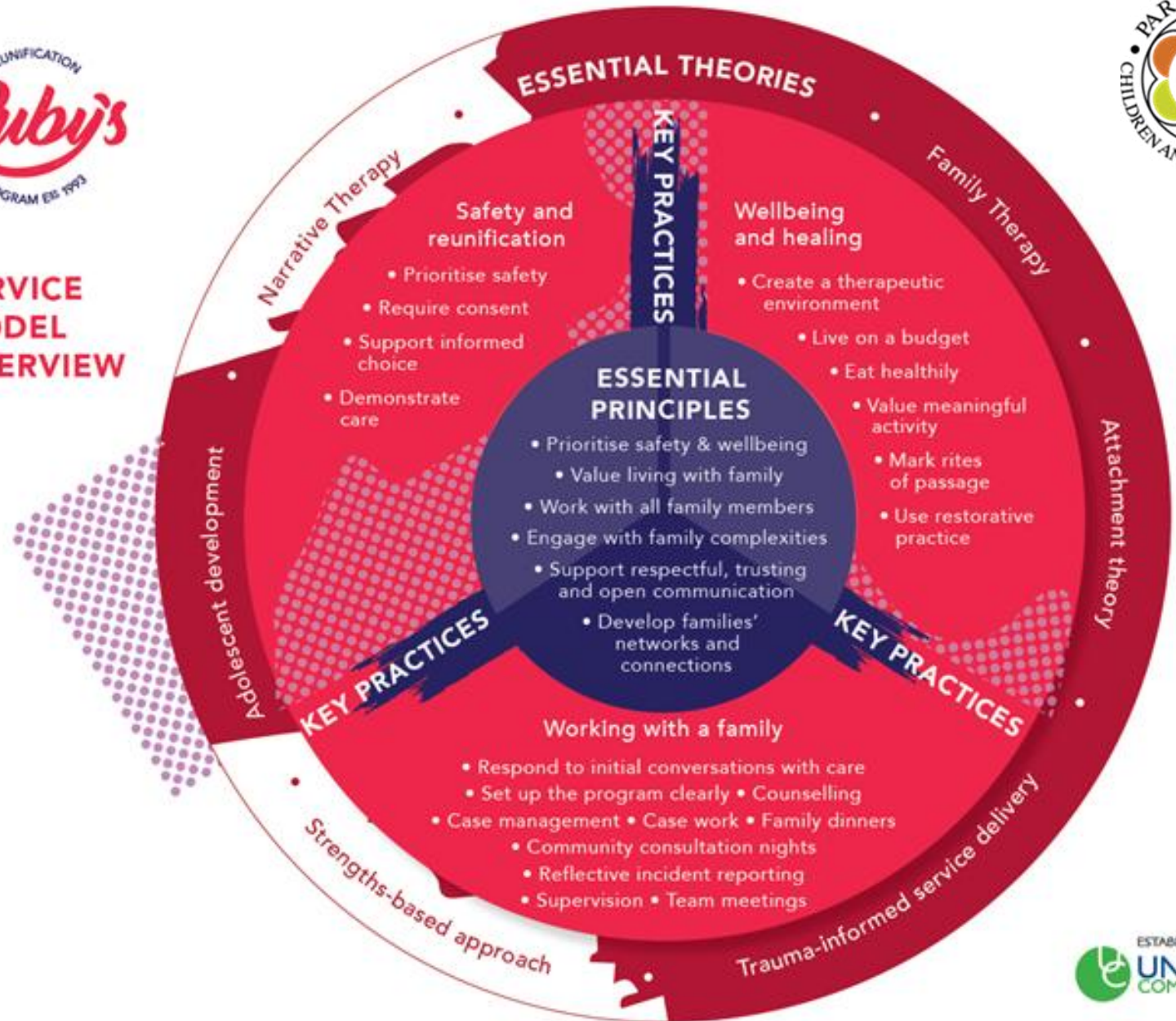


Nudging the System: Ruby's Reunification Program

Park's commitment to diverting young people 12-17 from becoming homeless



SERVICE MODEL OVERVIEW



NEXT HORIZON

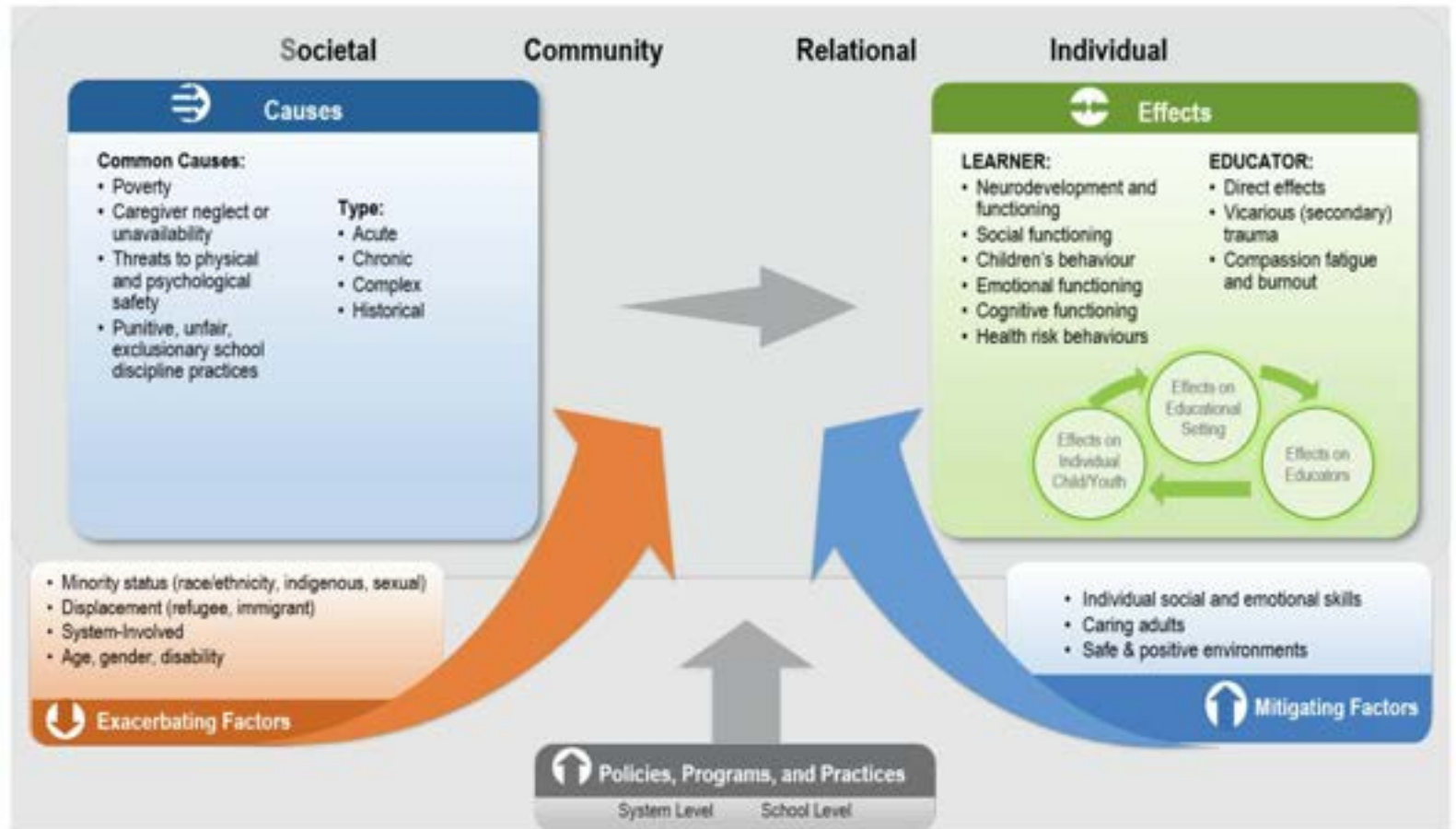
Systems issues: Children and Young people who have experienced trauma vs educational outcomes.



Figure 2. Adverse childhood experiences across the life-span



Figure 1. The effects of adversity and/or trauma on educational outcomes





"All the children and young people we see are superstars.

Our job is to guide them towards seeing themselves as being valued, important, smart, funny, incredibly gifted, and so much more than just what has happened to them."

Kim Brooklyn

CEO, Parkerville Children and Youth Care



Phone: 08 9235 7000

Email: administration@parkerville.org.au

www.parkerville.org.au

© Parkerville Children and Youth Care Inc. 2022

